

lens
uncil
ears
rden
ow a
area.
dens
oup :
sn17.
rg.uk



Tottenham Cemetery was opened in 1857 with various later extensions. It is a conservation area with listed features such as the two chapels.



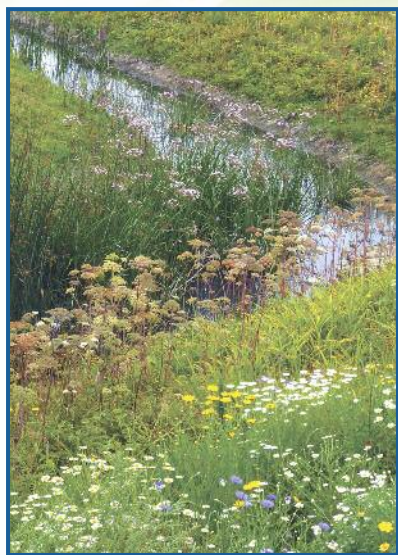
Bruce Castle is a Grade 1 listed 16th century manor house. It opened as a museum in 1906 and continues to be a thriving and popular visitor attraction. Bruce Castle Park was the first public park in Tottenham. www.friendsofbrucecastle.org.uk



Markfield Park was the site of a Victorian sewage works. The recreation ground opened in 1938. Recent improvements include a new café, an improved sports pavillion, heritage building works to Markfield Museum and general landscape improvements. The park was awarded a Green Flag in 2010. **Friends of Markfield Park:** www.markfieldpark.org.uk

Markfield Beam Engine, part of the Victorian sewage works, has been restored by volunteers and is operated under steam power on designated days. www.mbeam.org

Lordship Recreation Ground, opened in 1936, underwent major redevelopment in 2012 including restoration of the River Moselle (shown left), other major re-landscaping work, a new environmental centre with cafe and toilets and the restoration of the Shell Theatre and nationally unique model traffic area. A visit to these facilities is recommended! **Friends of Lordship Rec:** www.lordshiprec.org.uk



use

ve
s

tion
gey.

ents

