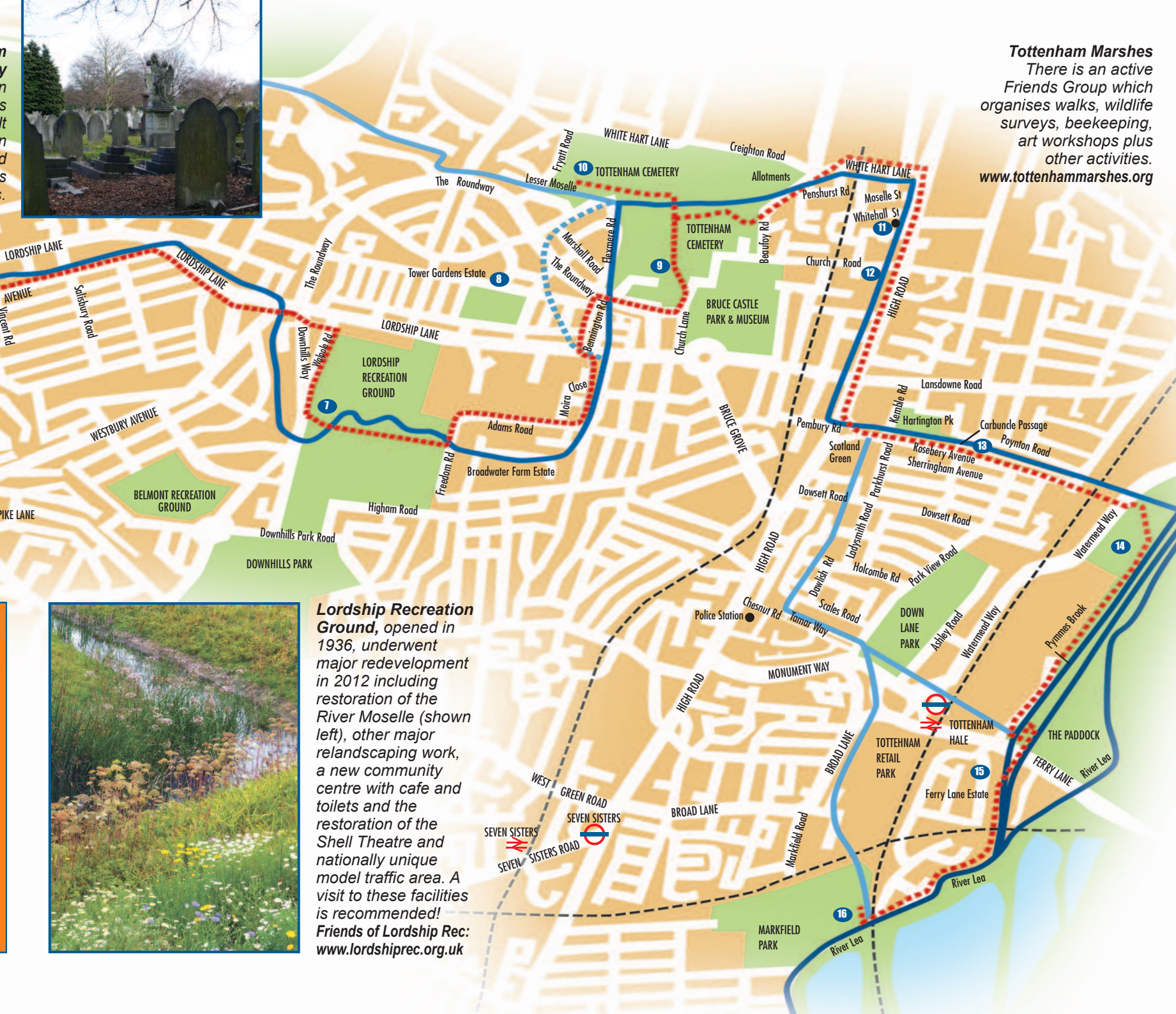




**Tottenham Marshes**  
 There is an active Friends Group which organises walks, wildlife surveys, beekeeping, art workshops plus other activities.  
[www.tottenhammarshes.org](http://www.tottenhammarshes.org)



Photo: Chris Fleewood



**Lordship Recreation Ground**, opened in 1936, underwent major redevelopment in 2012 including restoration of the River Moselle (shown left), other major re-landscaping work, a new community centre with cafe and toilets and the restoration of the Shell Theatre and nationally unique model traffic area. A visit to these facilities is recommended!  
**Friends of Lordship Rec:**  
[www.lordshiprec.org.uk](http://www.lordshiprec.org.uk)

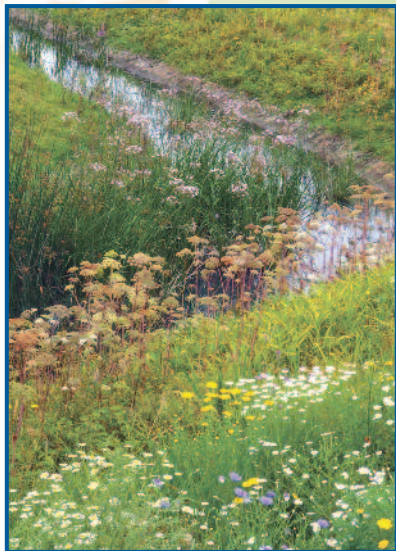


Photo: Alan Stanton

**Markfield Beam Engine**, part of the Victorian sewage works, has been restored by volunteers and is operated under steam power on designated days.  
[www.mbeam.org](http://www.mbeam.org)

**Markfield Park** opened in 1938. It was awarded a Green Flag in 2010. Recent improvements include a new café. **Friends of Markfield Park:**  
[www.markfieldpark.org.uk](http://www.markfieldpark.org.uk)